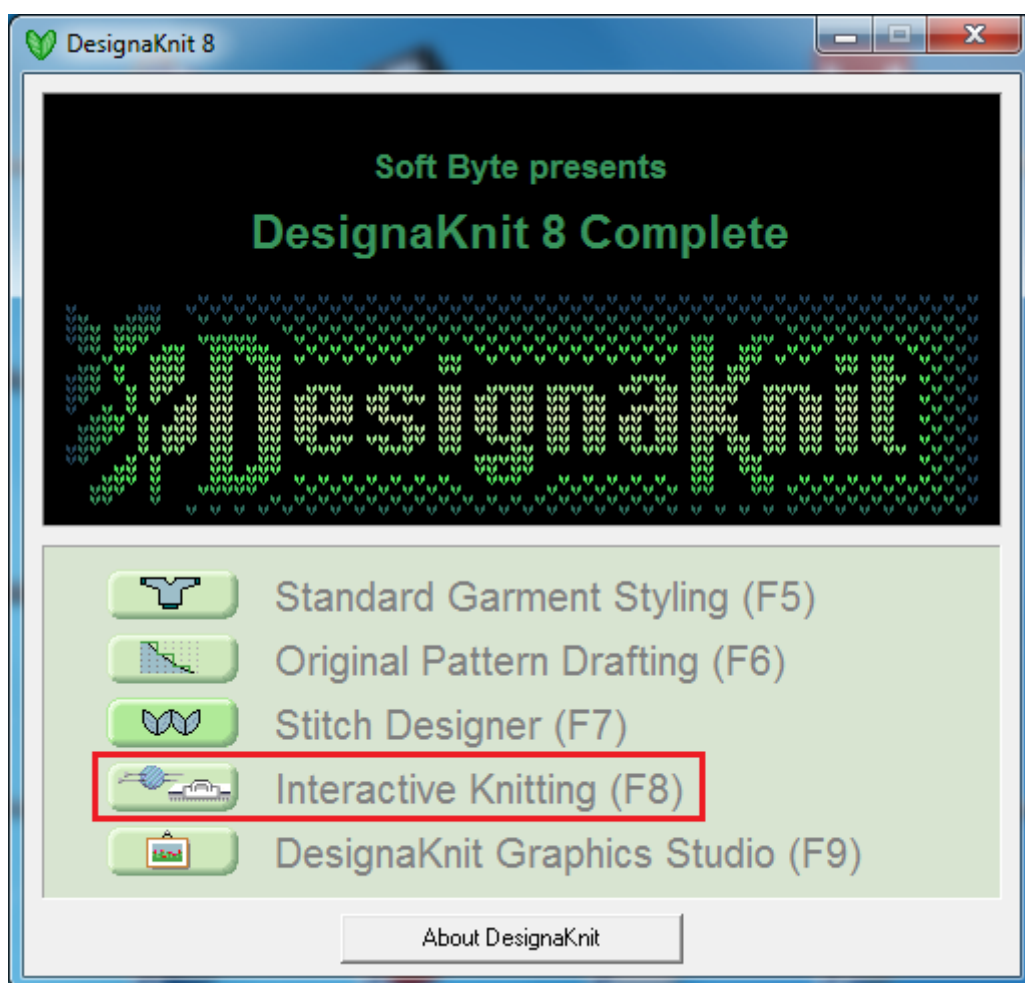
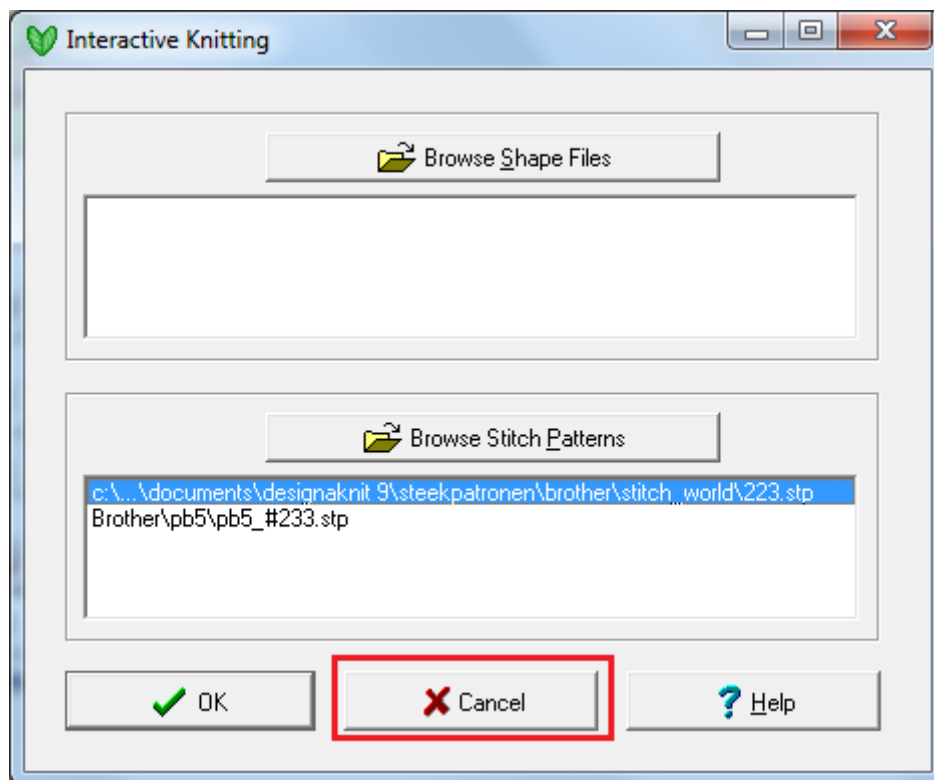


This application note contains step by step instructions on how configure your Superba/Singer knitting machine that is connected via SuperbaKnit with DesignaKnit

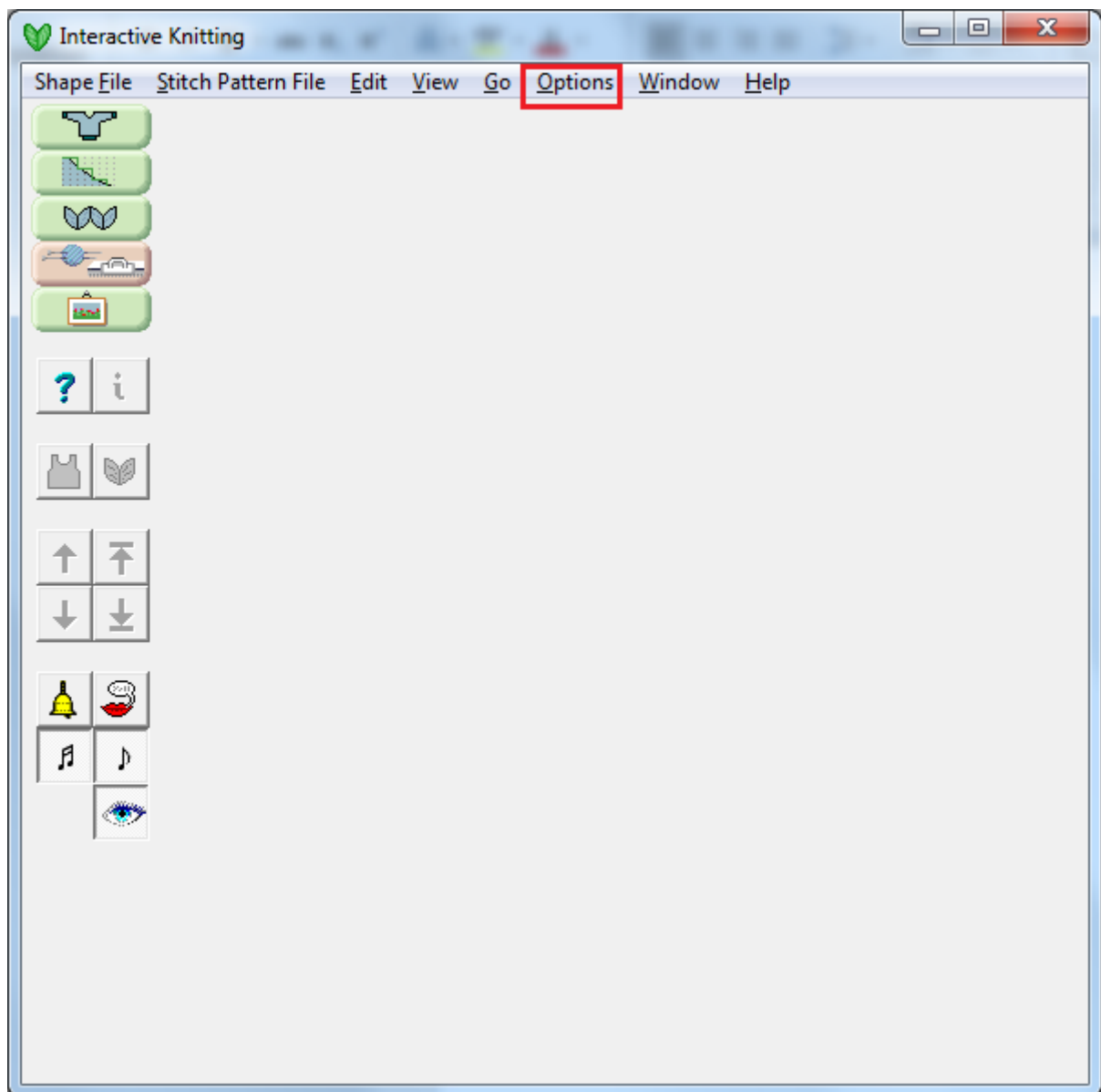
Start DesignaKnit



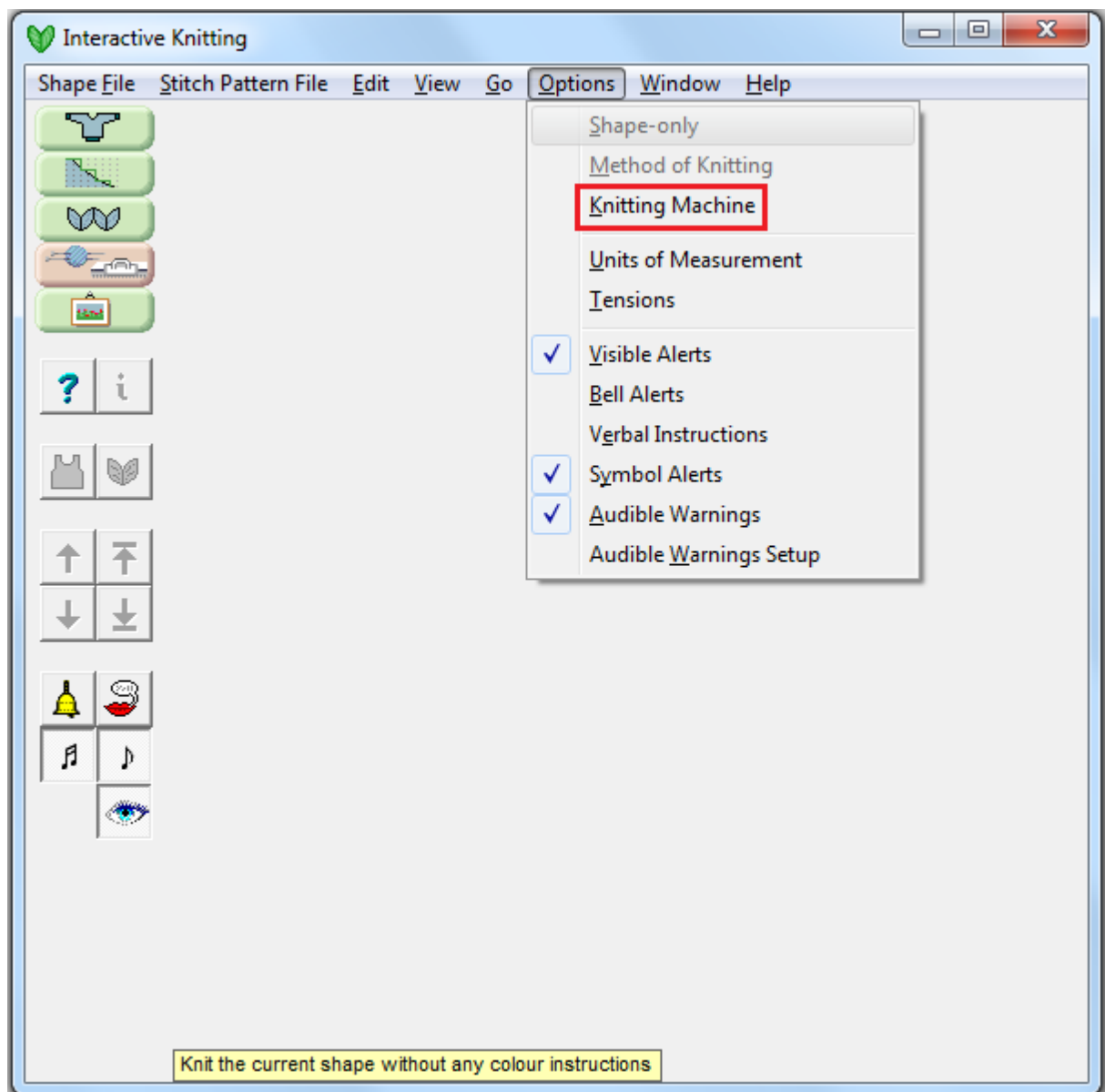
Press Interactive Knitting



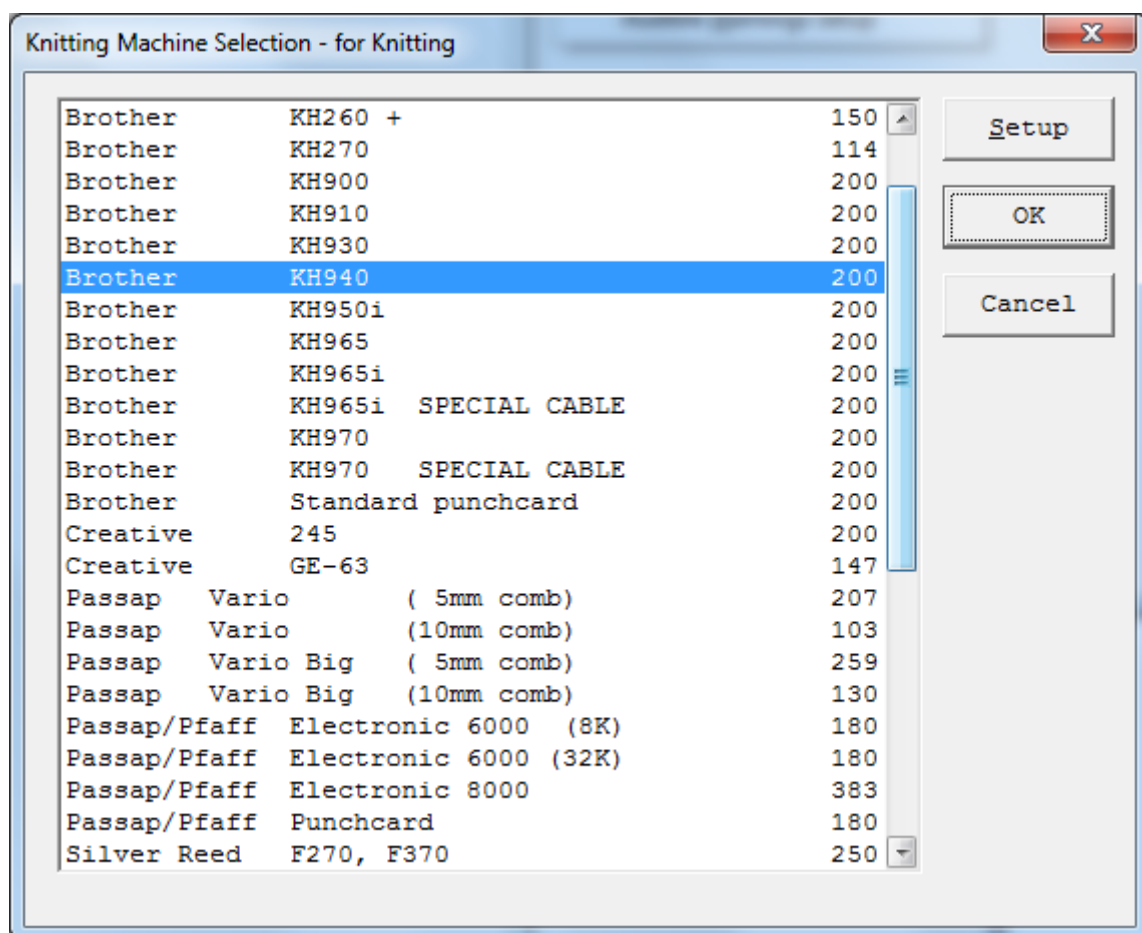
Press Cancel



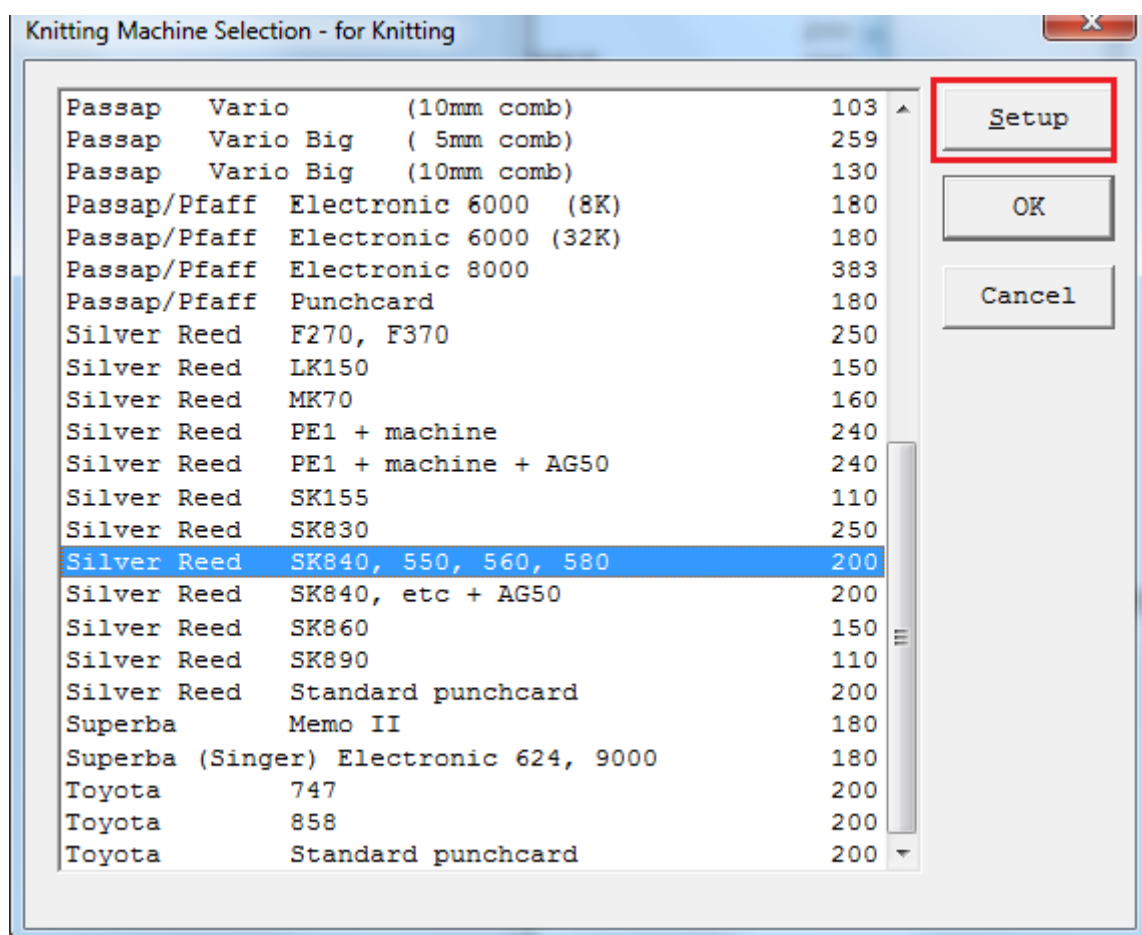
Press Options



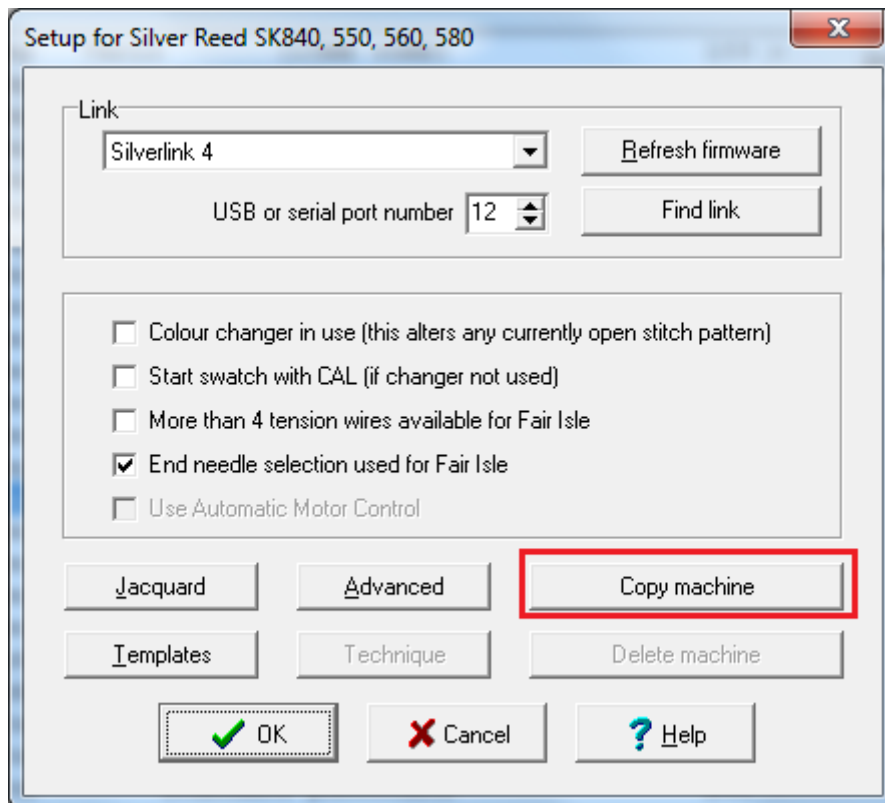
Press Knitting Machine



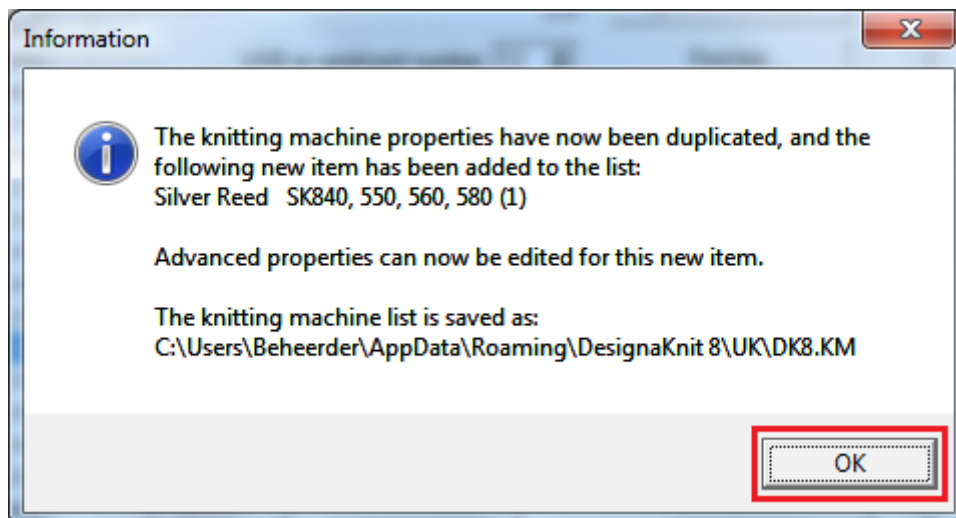
Scroll down to Silver Reed SK840, 550, 560, 580 and click on the entry (becomes blue)



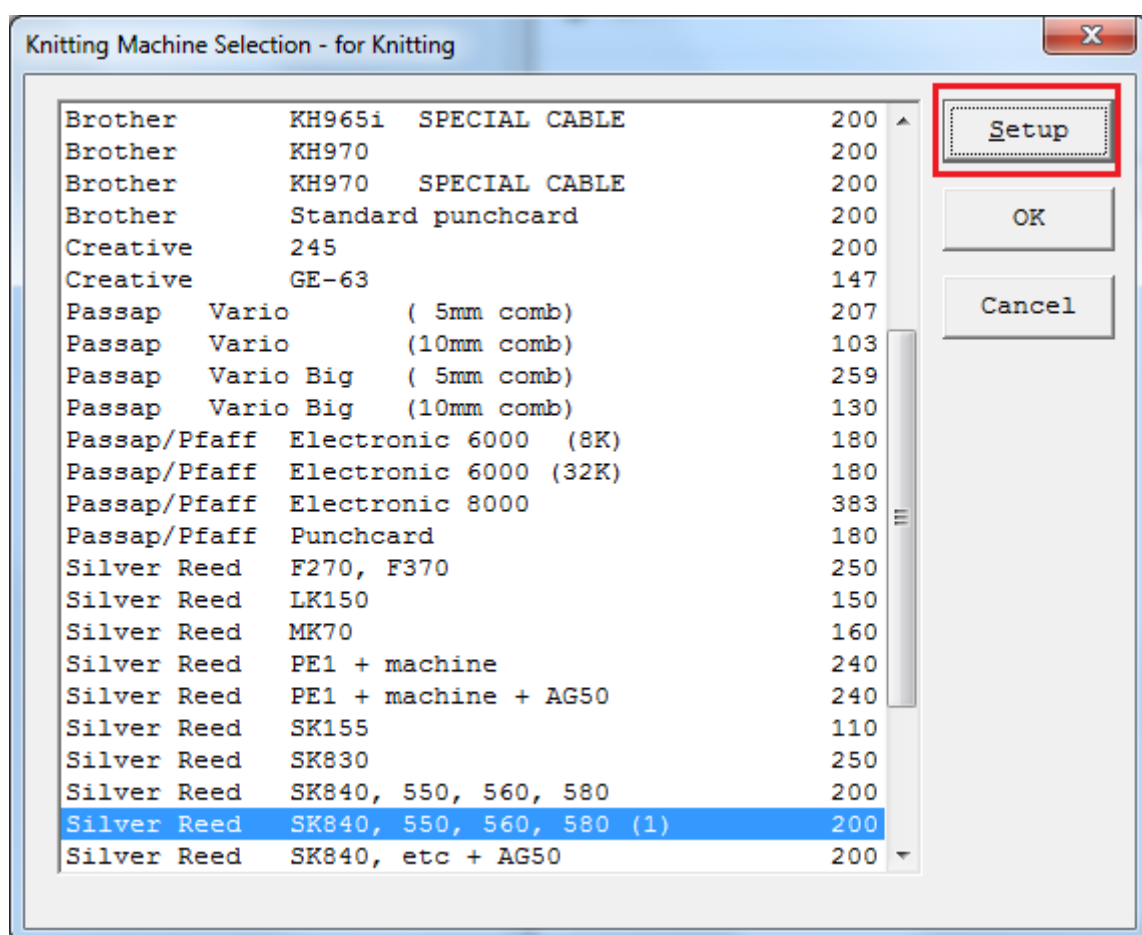
Press Setup



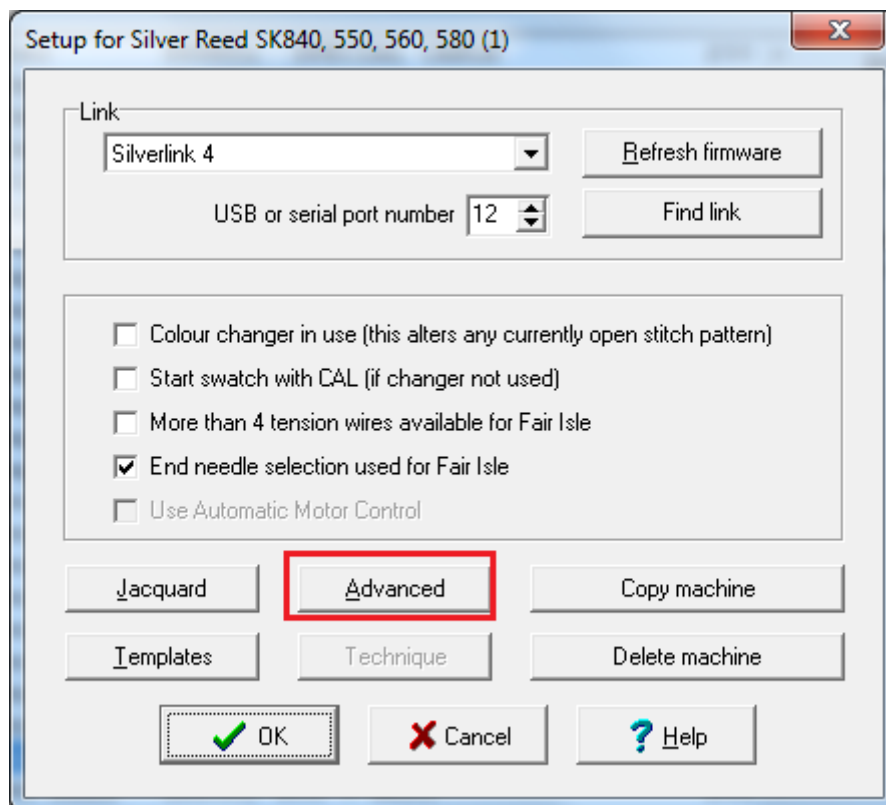
Press Copy machine



Press OK



The copied machine is selected. Press Setup



Press Advanced

Advanced Setup for Silver Reed SK840, 550, 560, 580 (1)

Manufacturer / Model

Silver Reed SK840, 550, 560, 580 (1)

☒ Electronic
☐ Centres patterns to the left

Use slow downloads 0
Maximum stitches 200
Maximum colours per row for Jacquard 6
Device memory (Kbytes) 0
Interface method 6
Preselect type 0
Carriage passes calculation method 1
Colour changer type 2

OK
Cancel
Help

Type in the Manufacturer / Model field the make and model of your machine like:

Superba Memo II or any text that represents the machine. The length of the Manufacturer portion is 14 characters.

Advanced Setup for Silver Reed SK840, 550, 560, 580 (1)

Manufacturer / Model
Superba Memo II

☒ Electronic
☐ Centres patterns to the left

Use slow downloads 0
Maximum stitches 200
Maximum colours per row for Jacquard 6
Device memory (Kbytes) 0
Interface method 6
Preselect type 0
Carriage passes calculation method 1
Colour changer type 2

OK
Cancel
Help

Set maximum stitches to 180

Advanced Setup for Silver Reed SK840, 550, 560, 580 (1)

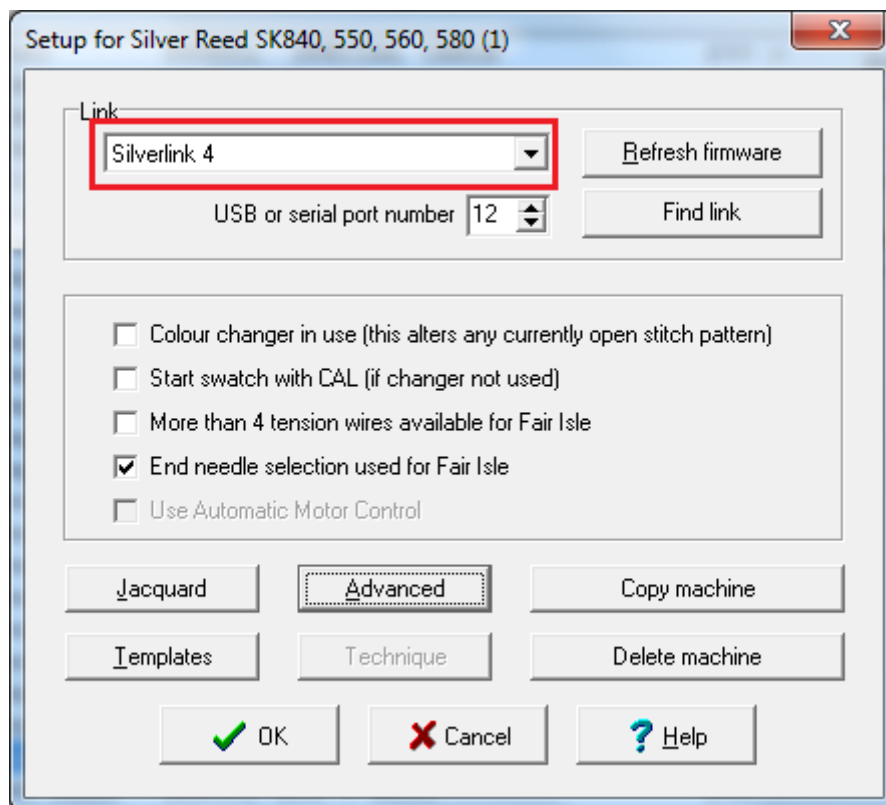
Manufacturer / Model
Superba Memo II

☒ Electronic
☐ Centres patterns to the left

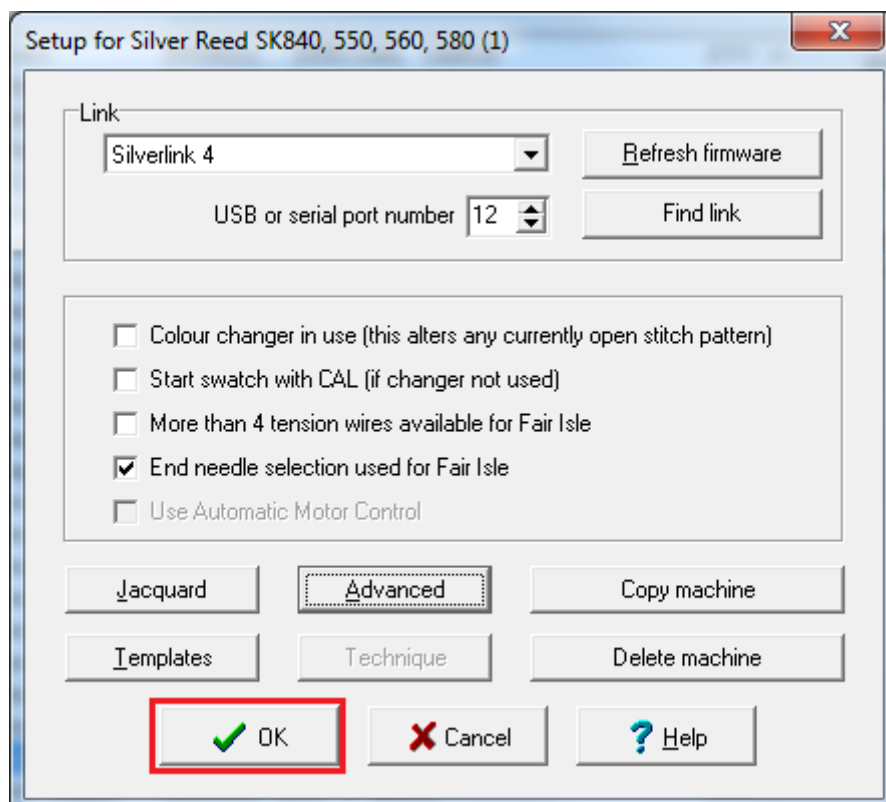
Use slow downloads 0
Maximum stitches 180
Maximum colours per row for Jacquard 6
Device memory (Kbytes) 0
Interface method 6
Preselect type 0
Carriage passes calculation method 1
Colour changer type 2

OK
Cancel
Help

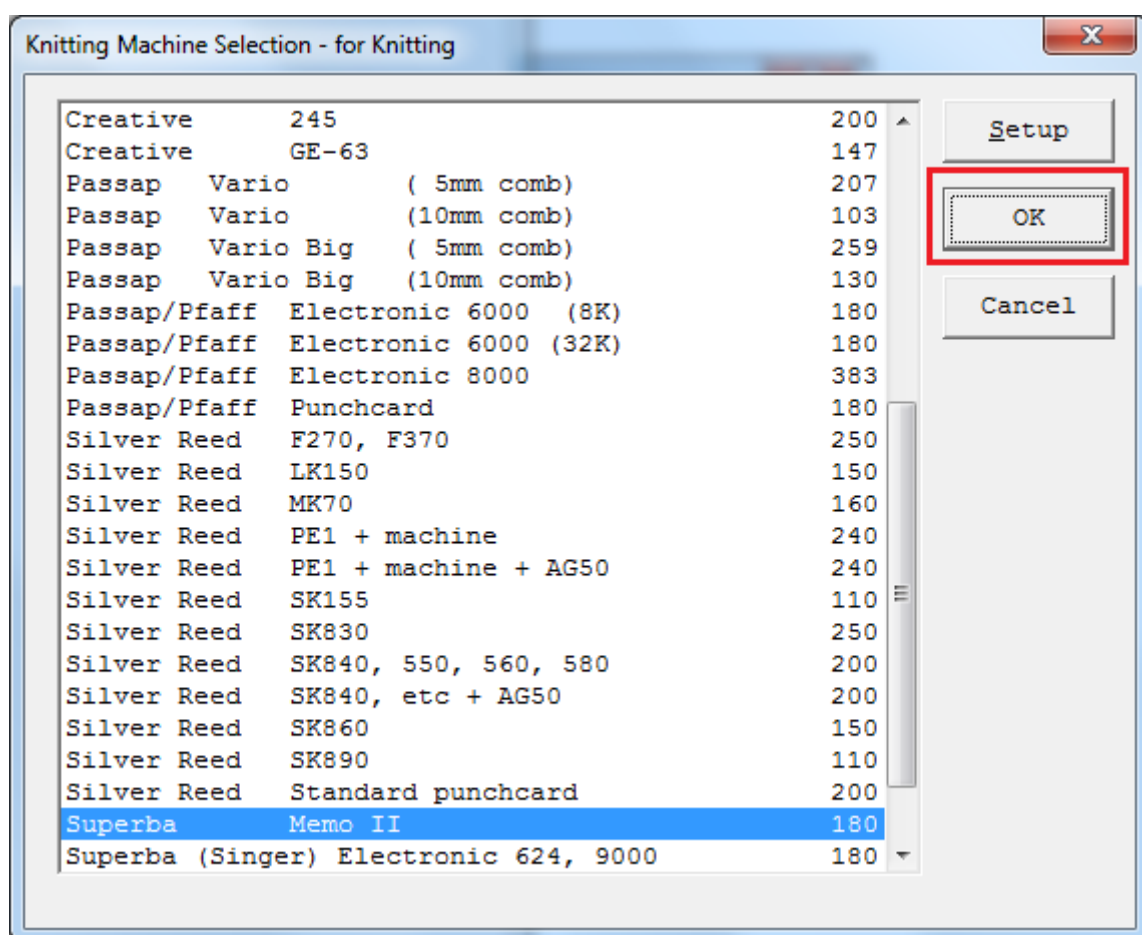
Press OK



Set Link to Silverlink 4



Press OK



Press OK to select the new machine for Interactive Knitting.